

Glass Bottom Boat
Shipwreck
TOURS

MUNISING, MICHIGAN



AS SEEN ON



weather.com

Come explore the
depths of Lake Superior
and its sunken vessels.

A unique family experience!

www.shipwrecktours.com



Tom Buchkoe photo

Above and right inset:
The Bermuda ~ a 150' wooden hull schooner that sank in the mid-1880's - remarkably intact and only 12' below the surface.



Maritime History

History comes alive as you discover turn-of-the-century shipwrecks while aboard the *Miss Munising* and the *Fireball*. Preserved by Lake Superior's frigid waters, these doomed vessels lay on the bottom of the bay where they met their fates when the tempestuous lake displayed its violent power.

The two-hour tour covers a distance of about ten miles and features sights both above and below the water.



See back for schedule and prices.

View underwater shipwrecks without getting wet aboard our glass bottom boats!

Our tour boats have two large viewing wells so that all of our passengers can enjoy watching the shipwrecks through the glass. Our boats pass over the shipwrecks while the crew narrates.

In addition to 19th-century shipwrecks, scenic rock formations and an historic lighthouse, passengers may spot bear cubs, coyote and other wildlife on their excursion around Munising Bay.

One of Michigan's
**"10 Best Summer
 Travel Secrets!"**
 ~ Detroit News



Everyone gets a
front row seat!



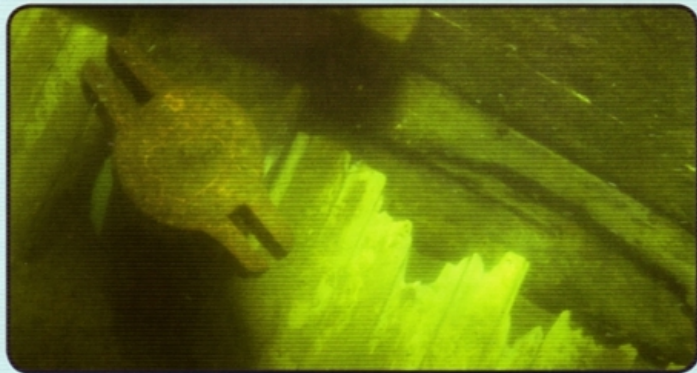
Unique Experience

For years these vessels could only be seen by divers, but now, through specially designed through-the-hull glass viewing areas, all can experience the mystique of these turn-of-the-century shipwrecks. During the narrated tour you'll hear the tales of how the *Bermuda*, the *Scow Schooner* and the *Herman H. Hettler* met their demise in the clear waters of Lake Superior. With up to fifty feet of visibility, everyone has a view of the wreckage below.

- Live, fully narrated 2-hour tour
- U.S. Coast Guard-certified vessels
- Bus tours welcome
- Visit our unique gift shop
- Open rain or shine



Come aboard! Discover the shipwrecks of the Alger Underwater Preserve through the clear waters of Lake Superior and view the rock formations of Grand Island.



Above: One of the many beautiful rock cliffs seen on the evening cruise around Grand Island.

Right Top: A bald eagle perched high above Grand Island is one of the many wildlife creatures seen by visitors on the cruises.

Right Bottom: The East Channel Lighthouse is a small wooden frame lighthouse on the southwest shore of Grand Island. It was constructed during the period of 1869-1870 for the purpose of guiding vessels into Munising Harbor from the east.



Evening Cruise

Join us for an enjoyable evening cruise around Grand Island on the *Miss Munising*, viewing the majestic rock formations of the Grand Island National Recreation Area. This 13,000 acre island features pristine wilderness, with just a few settlements, and remains as it was during the fur trading days of the Hudson Bay Company. On the trip you'll hear the history and view the towering rock cliffs that make up the island. You'll also see the famous East Channel Lighthouse as well as the North Light, the highest lighthouse above sea level in North America. The evening cruise takes 2-1/2 hours to complete, runs in July and August only, and is the same price as the standard shipwreck tour cruise. Please call for departure times and reservations.

SCHEDULED DEPARTURES

All times are Eastern Standard Time.

Starting Saturday before Memorial Day
through first week of June: 1:00 p.m.

Remainder of June: 10:00 a.m. & 1:00 p.m.

July, August through Labor Day (Sept. 6th):
10:00 a.m., 12:30 p.m., 1:00 p.m. & 4:00 p.m.

Remainder of September: 10:00 a.m. & 1:00 p.m.

October 1-10th: 1:00 p.m.

2010 Prices

adults: \$30, children 6-12: \$12, under 5: Free

Open rain or shine – 7 days a week!

Glass Bottom Shipwreck Tours

1204 Commercial Street

Munising, Michigan 49862

For reservations or more information call:

(906) 387-4477

Visit our website:

www.shipwrecktours.com



**Bus Tours Welcome! Handicap Accessible
Dog Kennels Available**

